



Webex on Flip

Samsung Flip with Cisco Webex Room Kit Mini

Future of work. On display.

Collaboration is the foundation for success in today's fast-paced business world. Industry leaders Samsung and Cisco have come together to transform the modern workplace with Webex on Flip. The partnership unites Cisco's innovative Webex collaboration platform with leading Samsung signage technology, providing a seamless, integrated meeting experience.

Interactive features make the Flip a powerful collaboration tool anytime, anywhere. And when combined with Cisco's leading video conferencing technology, people can come together like never before whether in a meeting room or working remotely from multiple locations. This is the future of work, on display.

Highlights

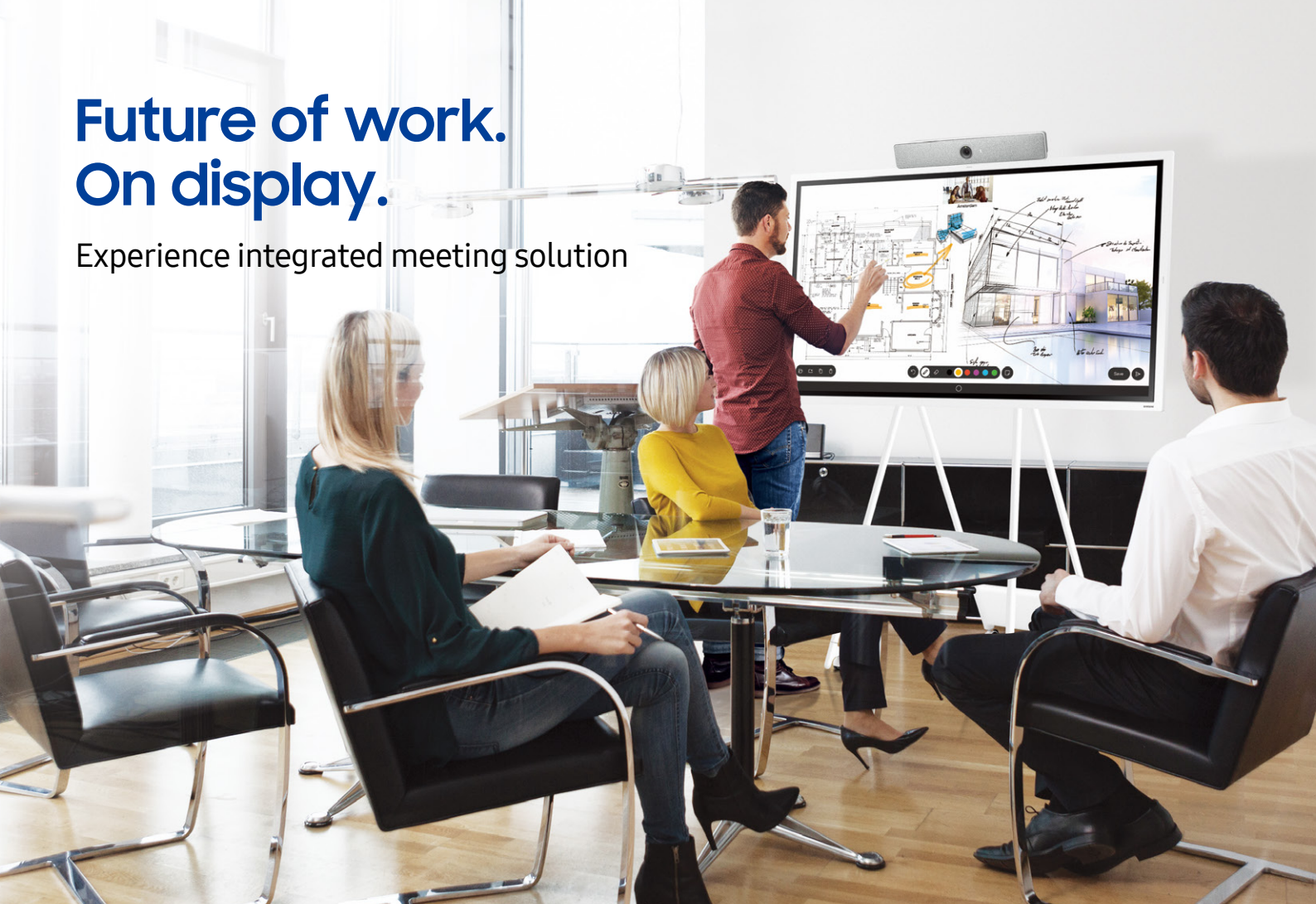
- Enable flexible utilization of both video conferencing and digital flipchart as needed
- Utilize useful features for whiteboarding including pen-to-paper-like writing experience, various edit tools
- Foster more productive and engaging collaboration in any business setting to get things done
- Facilitate smoother video conferencing through crystal-clear audio and detailed picture quality
- Use together with Webex Teams to support a better workflow
- Share and source content from multiple connected devices

SAMSUNG

Cisco Webex

Future of work. On display.

Experience integrated meeting solution



Why Webex on Flip?

By aligning its industry-best visual display technologies with Cisco's market-leading video collaboration solutions, Samsung's professional offerings transform the modern meeting space. Today's professionals cannot afford to lose valuable time by struggling with complicated technology. The Samsung and Cisco solutions eliminate these challenges through a convenient and intuitive operational flow. Bringing together a comprehensive suite of features which meets the needs of people who want to use a digital flipchart rather than analog to upgrade their meeting environment. Webex on Flip unites Samsung's innovative interactive digital flipchart technology and Cisco's advanced meeting solution to enable more accessible meetings and creative collaboration.

Cisco Webex Room Kit



Webex Room Kit Mini



Samsung Flip



Flip 55"



Flip 65"

What is Cisco Webex Room Kit Mini?

The Cisco Webex Room Kit Mini is a compact video conferencing and collaboration device optimized for huddle space and small meeting rooms. Combined with a flat-panel displays it brings people together to collaborate across any distance. Equipped with multiple sensors and AI-power features Cisco Webex Room Kit Mini provides intelligent ease of use to allow you to focus on your meeting, and support your needs whether it is to share a presentation, join an audio or video conference or create content together with your team members locally in the room or remotely. Combined with the Webex Teams application you can easily move your meeting between your personal device and the Room Kit Mini for a better huddle space experience.

Features

Cisco Webex



Smart meetings

Intelligent camera and audio solutions secure always optimal framing with high quality video, suppress background noises for optimal audio experience.



Smart presentations

Support for both wired and wireless sharing and 4K content make for effective presentations.



Smart integrations

Monitor meeting space utilization, Integrate with other facility service for a better workplace experience.



Access to Webex service

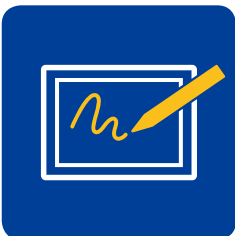
Through Room Kit Mini you can access Webex calling, Webex Meetings, Whiteboard service, Webex Teams spaces, Remote Management and Room Utilization analytics.

What is Samsung Flip?

The Samsung Flip is an intuitive and easy-to-use digital flipchart for any meeting environment, offering enhanced collaboration capabilities in an easy UI with a host of features and tools. Meetings are made smarter through simple notation modes, flexible image editing, comprehensive connectivity options and screen sharing capability, allowing teams to work smarter, faster and better.

Features

SAMSUNG



Pen & paper annotation

InGlass technology ensures a smooth and familiar pen-to-paper-like writing with no delay, while users can easily erase drawings with a finger or palm swipe.



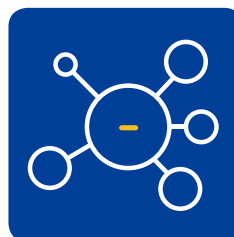
Intuitive usability

Write on any background source without affecting work behind the original layer, scroll through up to 20 pages and merge any image to the roll at the click of a button.



Convenience

Effortless presentations supported by any web browser, embedded versatile templates as well as a document viewer without additional PC.



Powerful connectivity

USB, HDMI, NFC and screen mirroring capabilities for versatile connectivity, along with screen sharing and meeting recap distribution.

Samsung and Cisco Webex offer solutions for smarter collaboration

Samsung and Cisco Webex together provide businesses with optimal meeting room solutions to create a connected and collaborative experience like never before. With Webex on Flip, all users will have a smooth conference experience in crisp, clear clarity. Collaboration is the core focus of Webex on Flip, allowing multiple meeting participants to share the screen in real-time and create the most efficient meetings possible.

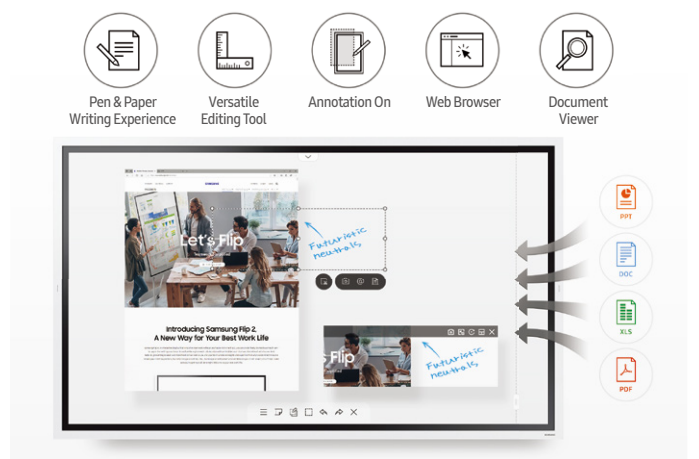


Perfect video conferencing solution

Cisco's Webex Room Kit Mini provides important video and audio-conferencing features for intelligent meeting experience. AI-powered capabilities provides a more convenient way of communicating by automatically positioning the face of meeting participants in the center of the screen, while background noise suppression ensures a smooth video conference experience with no delay.

Multi-way collaboration

Webex on Flip enables real-time, 2-way white boarding, allowing meeting participants in different locations to share the same screen and make edits. Users can utilize the annotation tool, delete or add content, all at the same time creating more efficient and collaborative meetings.






Wireless presentation

Webex on Flip allows users to utilize their own laptop or mobile with a wireless connection to easily share content with others. This ensures intuitive and convenient operation without the need for any additional hardware or technical difficulties.

Best-in-class digital flipchart

The Flip has a host of innovative features for any needs of meeting environment. Users can feel a smooth pen-to-paper-like writing experience, easily change content with the editing and annotation tools, all supported by access to a web browser directly on the Flip without any additional device and document viewer for comprehensive functionality.

Specification

Model		Webex Room Kit Mini	Model	WM55R	WM65R
					
Recommended meeting room type		Designed for huddle space, typical 5 seat scenario			
Collaboration capabilities		Video/Web conference Audio conference Wired/wireless presentation Multi-way Whiteboarding			
Intelligent meeting capabilities		Auto wakeup One Button to Join Optimal camera framing Background noise suppression Auto pairing of personal devices Voice Assistant			
Codec	Built-in HW components	Codec, Camera, Speakers, Microphones			
	Compute / codec HW	Embedded appliance for video conferencing / H.323, SIP, Webex			
	Software compatibility	Cisco Webex Room OS Cisco Collaboration Endpoint SW - CE 9.6 or later			
	Video standards and definition	H.264 / up to 1080p60			
	Audio standards and quality	G.711, G.722, G.722.1, G.729, AAC-LD, Opus / 20kHz Audio			
	Content standards and definition	H.239, BFCP / up to 4kp5			
	Wireless sharing	Webex Teams/Meetings App / up to 4kp5			
Camera	Sensor resolution	4K UltraHD			
	Field of view	120° Horizontal			
	Zoom	2x (Digital)			
Microphone		Built-in microphone array			
Speakers		Built-in full range speaker + dual woofers			
Connectivity		1x HDMI Video input 1x HDMI Video output 2x Ethernet 1x USB 2.0 A 1x USB 2.0 C 1x micro USB WiFi 802.11, 2.4GHz/5GHz			
Dimensions		19.7 x 3.2 x 3 inch 50.0 x 8.1 x 7.7 cm 7lb / 3.2 kg			
Collaboration platform		Webex Cloud Services			
Voice calls / Audio conferencing		Webex Calling			
Video and Web conferencing		Webex Meetings			
Team collaboration, incl. Meetings / IM / Spaces / Whiteboarding / Files		Webex Teams			
Users and Device Management and provisioning		Webex Control Hub			
Scheduling and calendar integration		Webex Hybrid Calendar Service			
			Panel		
			Diagonal Size		55" / 65"
			Type		60Hz New Edge
			Resolution		3,840 x 2,160 (Landscape)
			Brightness (Typ.)		350 (without glass), 220 (with glass)
			Contrast Ratio (Typ.)		4000:1 (Typ.) (without glass)
			Viewing Angle (H/V)		178:178
			Operation Hour		16/7
			Response Time (G-to-G)		8ms (Typ.)
			Sound		
			Speaker Type		Built in Speaker (10W x 2)
			Connectivity		
			INPUT		VIDEO (Basic) HDMI 2, (With Tray) HDMI 3
			USB		(Basic) USB 1, (With Tray) USB 2, USB External (In/Out) 1
			OUTPUT		Touch Out (Basic) Touch Out 1 (USB Upstream Type), Audio Out 1 (With Tray) Touch Out 2, Audio Out 1, Screen Share (HDMI-Out) 1
			INTERNAL		SENSOR (Basic) Acceleration sensor (With Tray) Acceleration sensor, NFC
			EXTERNAL		CONTROL RS232C, LAN, WiFi/BT
			Touch		
			Type		InGlass™
			# of Drawing		Multi writing up to 4
			Touch Pen Type		Passive Pen with magnet
			Object Recognition Range		2mm / 4mm / 8mm / 50mm, 1024 Level on Brush Mode
			Touch Response Time		6.7ms
			Power		
			Type		Internal
			Power Supply		AC100-240V 50/60Hz
			Power Consumption		
			Max (W/h)		154 / 181.5
			Typical (W/h)		80 / 100
			Rating (W/h)		140 / 165
			Stand-by (W/h)		0.5 / 0.5
			BTU (W/h)		525.14 / 618.915
			Mechanical Spec		
			Dimension (mm)		Set: 1297.4(W) x 768.2(H) x 599(D) Package: 1464(W) x 915(H) x 190(D)
			Weight (kg)		Set: 28.2 / 40.0 Package: 35.2 / 50.6
			Color		Light Gray
			VESA Mount		400 x 400
			Protection Glass		Yes
			Stand Type		Moving Stand, Wallmount / No-Gap Wall Mount
			Rotation		Yes / N/A with Flip No-Gap Wallmount (Available with rotation support 3rd party accessories sensor/portrait LUX already applied on Flip)
			Power Cable Length		3m
			Accessory		Cover-Jack
			Operation		
			Operating Temperature		0°C - 40°C
			Humidity		10-80%
			Key		Flip App
			Special		
			H/W		Super Clear Coating, Temperature Sensor, Pivot Display, Clock Battery (168hrs Clock Keeping), Built in Speaker (10W x 2), WiFi Module Embedded
			S/W		Flip S/W
			Platform		Muse-M (Tizen 5.0)
			Processor		CA72 Quad (1.7GHz)
			On-Chip Cache Memory		L1 (I/D) : 32KB / 32KB, L2 (Unified) : 1MB
			Clock Speed		1.7GHz CPU Quad
			Main Memory Interface		LPDDR4 1.6GHz 64bit 2.5GB
			Graphics		2D & 3D Graphics Engine - Up to 1920x1080. 32bpp - Supports OpenGL ES™
			Storage		8GB (2.65GB Occupied by O/S, 5.35GB Available)
			IO Ports		USB 2.0
			Operating System		Samsung Proprietary OS (VDLinux)
			Accessories		
			Included		Passive Pen(2), Power Cable, Touch Out Cable (USB upstream)
			Optional		
			Stand		STN-WM55R / N/A
			Wallmount		WMN4277SE / WMN-WM65R
			Tray		CY-TF65BRC / CY-TF65BRC
			Specialty		Flip LUX / Flip LUX

About Samsung Electronics Co., Ltd.

Samsung Electronics Co., Ltd. inspires the world and shapes the future with transformative ideas and technologies. The company is redefining the worlds of TVs, smartphones, wearable devices, tablets, cameras, digital appliances, medical equipment, network systems, and semiconductor and LED solutions. For the latest news, please visit the Samsung Newsroom at news.samsung.com. For more information about Samsung SMART Signage, visit www.samsung.com/business or www.samsung.com/displaysolutions.

About Cisco

Cisco (NASDAQ:CSCO) is the worldwide technology leader that has been making the Internet work since 1984. Our people, products and partners help society securely connect and seize tomorrow's digital opportunity today. Discover more at thenetwork.cisco.com and follow us on Twitter at @Cisco.

Copyright © 2020 Samsung Electronics Co. Ltd. All rights reserved. Samsung is a registered trademark of Samsung Electronics Co. Ltd. Specifications and designs are subject to change without notice. Non-metric weights and measurements are approximate. All data were deemed correct at time of creation. Samsung is not liable for errors or omissions. All brand, product, service names and logos are trademarks and/or registered trademarks of their respective owners and are hereby recognized and acknowledged.

Samsung Electronics Co., Ltd.
416, Maetan 3-dong, Yeongtong-gu, Suwon-si, Gyeonggi-do 443-772, Korea

2020-02